

STUDENT QUARANTINE PROTOCOL FOR IN-SCHOOL EXPOSURE (TK-12)

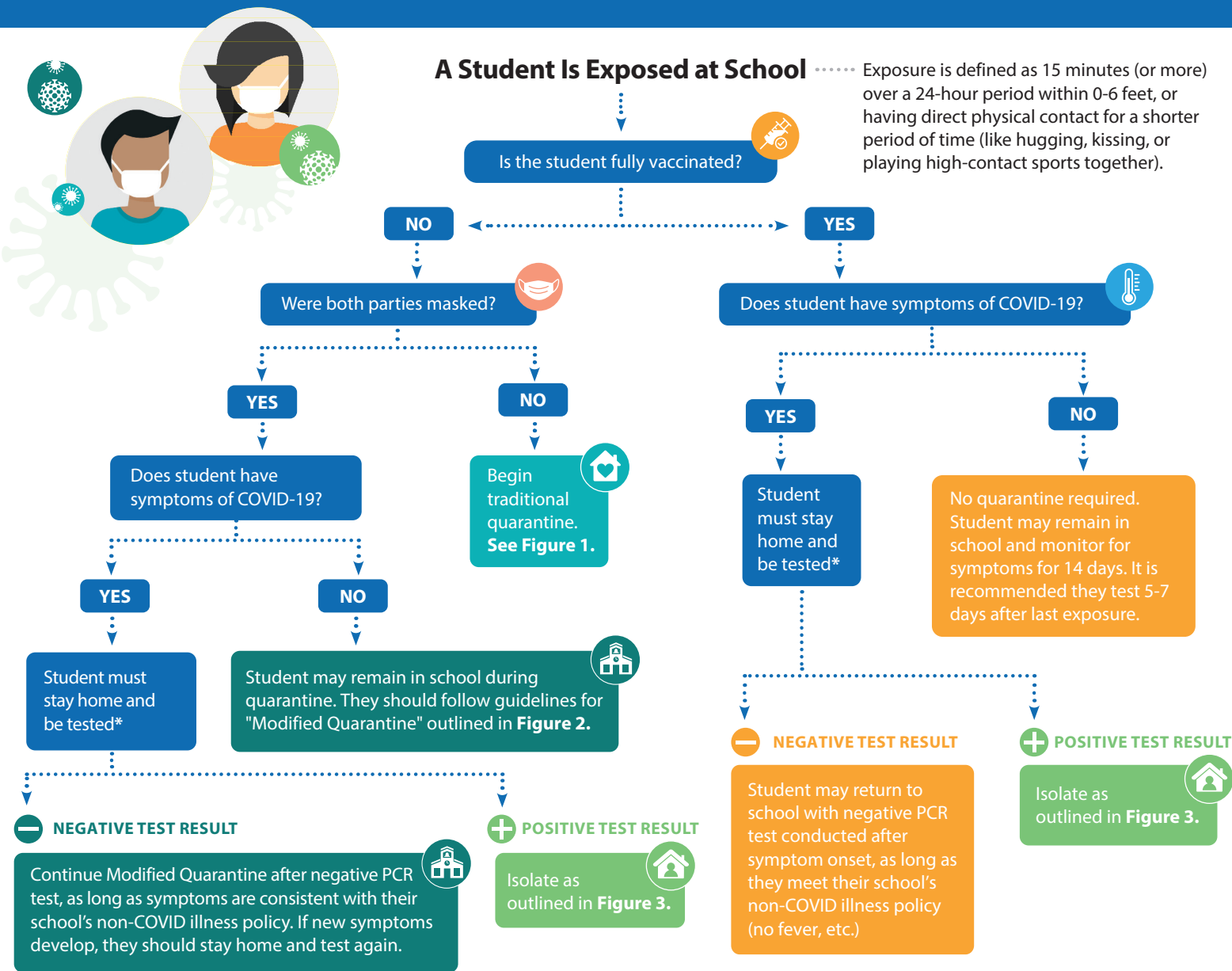


Figure 1

Traditional Quarantine *

- Stay home 10 days after most recent exposure
- If tested (negative) on day 5 or later, return to school after day 7 (shortened by 3 days)
- Continue monitoring for symptoms through day 14
- Should test ASAP if symptoms develop, follow Isolation Protocol (see Figure 3*)

Figure 2

Modified Quarantine *

- Can continue coming to school, must continue masking
- Must quarantine while outside of school (no extracurricular or community activities during quarantine period)
- Should test 2 times during quarantine period
- If no symptoms developed:** Quarantine ends after day 7, with a negative test conducted day 5 or later. Quarantine ends after day 10 *without* a negative test on day 5 or later
- Continue monitoring for symptoms through day 14.
- Test ASAP if symptoms develop, follow **Isolation Protocol***

Figure 3

Isolation Protocol *

If positive for COVID-19, or symptomatic and declining to test, isolate at home until:

- At least 10 days since symptoms began, OR at least 10 days since the date of the first positive test if they have no symptoms
- Fever-free for at least 24 hours without the use of fever-reducing meds
- Other symptoms have improved

* If anyone develops symptoms, they should isolate at home and be tested. If they develop symptoms after a negative test was collected, they should stay home and get tested again. Anyone who develops symptoms should receive a negative PCR result and/or an alternate medical diagnosis, OR complete isolation (Figure 3) before returning.

The above flowchart applies only to TK-12 students. Regardless of masking, unvaccinated school staff who are exposed to COVID-19 at work should follow the quarantine guidance set by the most current Sonoma County Health Order. Vaccinated school staff do not need to stay home unless they develop symptoms or test positive, in which case they follow **Isolation Protocol (Figure 3)**.